

The right counter for every event:

RENT

FESTIVAL – single



FESTIVAL – double



BUY

CATERING – soccer



CATERING – tennis



CATERING – golf

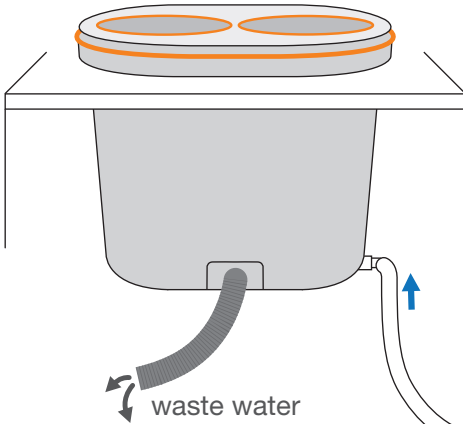


CATERING – exclusive

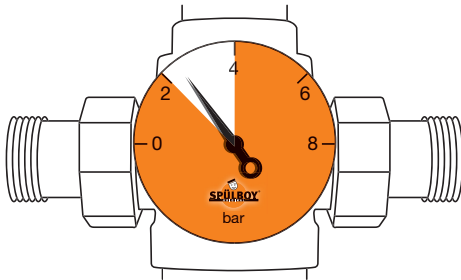
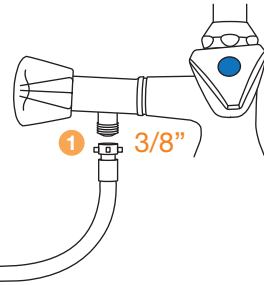


NU ON TOUR[®] MANUAL

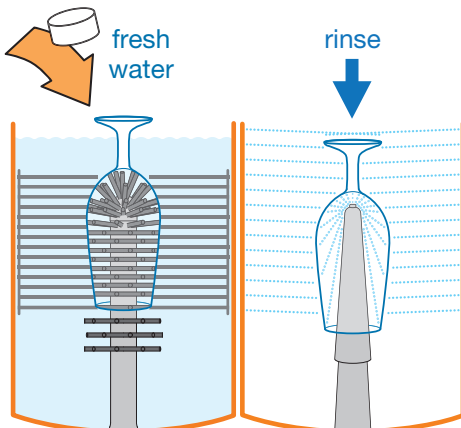
HOW TO INSTALL ?



- 1 connect the device to the main water supply (3/8" or likewise)



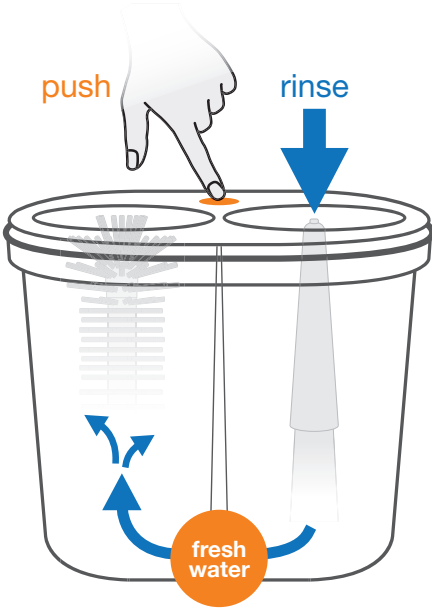
- 2 regulate the water pressure between 2 to max. 4 bar



- 3 check the system
 - fill in fresh water
 - fill in SPÜLBOY[®] tab
 - check horizontal water flow
 - ready to use



NU ON TOUR® MANUAL FIRST COMMISSIONING



1 check and keep the cleanliness of the device and the work environment

2 fill the pre-sink with fresh water; the NU® water+ per **push** button

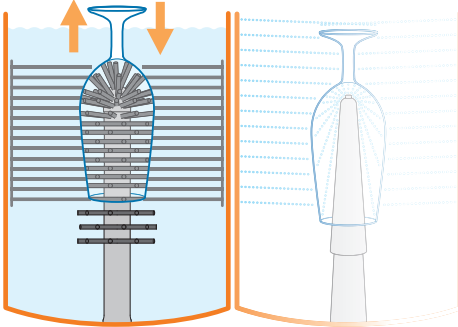
3 place an original SPÜLBOY® tab into the pre-washing canister

4 renew the NU® tab, if **during the rinsing (!)** no more foam forms (after appr. 6 hours)



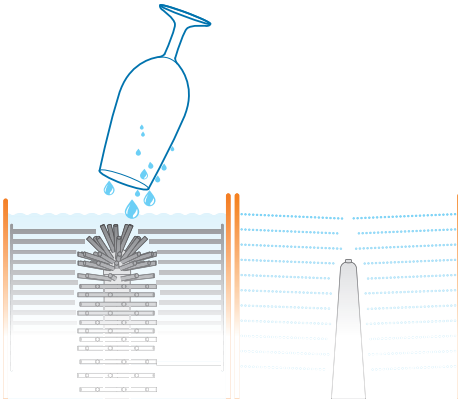
NU ON TOUR[®] MANUAL

HOW TO CLEAN A GLASS?

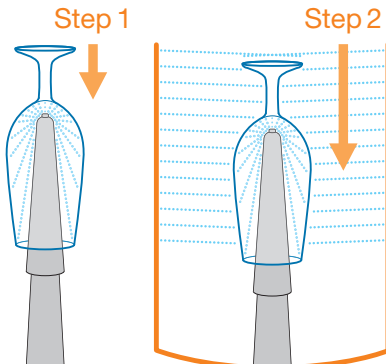


- 1 move the glass with steady up and down movements completely over the brush, at least **3-4 times**

don't twist!



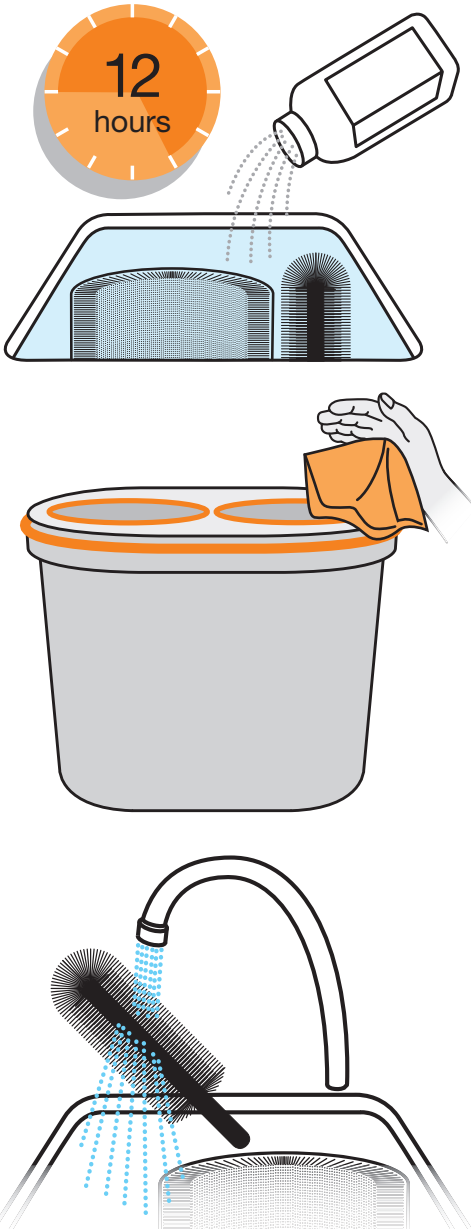
- 2 let the glass drain off briefly over the pre-washing canister



- 3 push down the 2 stage valve for at least **2-3 seconds**; rinse until the glass inside and outside is clearly cleaned

NU ON TOUR® MANUAL

HOW TO CLEAN SPÜLBOY®?



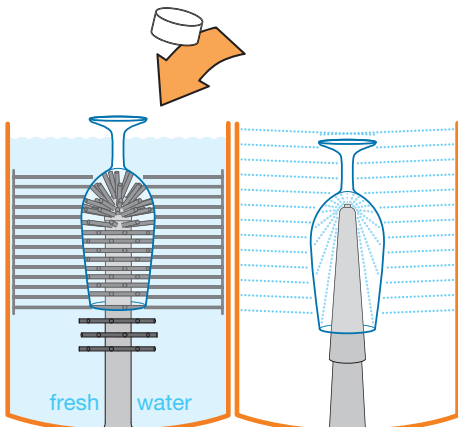
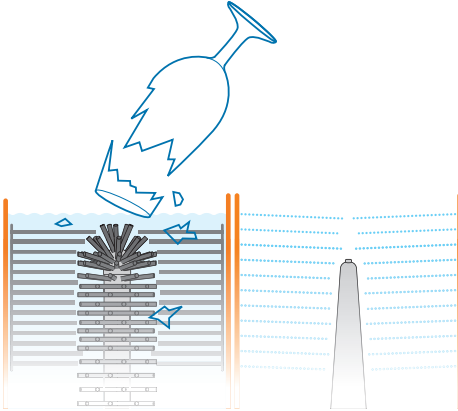
End of the day:

- 1 take off the brushes and place them with NU® brush sanitizer into a bucket/sink
- 2 fill up the sink with warm water and wait for appr. 12 hours
- 3 wipe off the device thoroughly with a clean sponge

In the morning:

- 1 rinsing brushes clean
 - 2 replace the brushes back into the device
 - 3 fill-up with fresh water and new tab
- ready to use

In case of glass damage:



- 1 stop the rinsing process immediately
- 2 take the device off the water pressure
- 3 let the water drain out of the pre-washing canister
- 4 take off the brushes carefully and rinse them clean
- 5 carefully remove all broken glass
- 6 place the brushes back into the device
- 7 check the system

